



# KEMPER HEADER PARTS CATALOGUE





# WE'VE GOT EVERY SEASON COVERED

**Forage Harvester Parts ✓ Mower Parts ✓ Rake & Tedder Parts ✓  
Bale Parts ✓ Tractor Parts ✓ Plough & Power Harrow Parts ✓**

John McCarthy Agricultural Machinery Ltd, trading as JMC Parts, was founded by the owner John McCarthy in the heart of West Cork, over 30 years ago.

JMC Parts is an agricultural machinery spare parts distributor that specialise in the sale of harvester and tractor parts.

JMC parts has grown from a small local retailer into a global enterprise which specialises in providing a quality replacement parts service for farmers and farm contractors across Ireland, and around the world.

With a personal background in contracting, John McCarthy and his team have continued to grow and develop a proficiency and familiarity with all the leading Agricultural Machinery brands, even in the off-season.

We keep on hand a comprehensive range of quality genuine parts for self-propelled harvesters, mowers, tillage machinery and tractors to suit all leading brands.

The core values of competitive parts supplies delivered on time remains at the heart of the service that JMC Parts delivers to it's growing customer base. Here at JMC Parts, we maintain a highly motivated team, who will be happy to help you with all of your enquiries.

**Our goal is simple; to provide the product parts that our customers need.**

# KEMPER HEADER PARTS CATALOGUE

Page	Content
<u>3</u>	Rotary Harvesting Unit
<u>4</u>	Rotary Harvesting Unit
<u>6</u>	Knife Rotars, 460
<u>7</u>	Belt
<u>8</u>	Couplers, 360
<u>10</u>	Gearbox
<u>11</u>	Clutches, 360/6008

## Catalogue Information

### July 2023 Edition

This parts catalogue is only a buyers' guide. No responsibility for any part number inaccuracies will be upheld. Call out sales team for any queries.



# REDUCE THE RISK OF BACK PAIN

## MAXIMO BASIC



- ✓ Mechanical Suspension
- ✓ Manual Weight Adjustment
- ✓ Manual Height Adjustment
- ✓ Armrests

## MAXIMO COMFORT PLUS



- ✓ Auto Weight Adjustment
- ✓ Air Suspension
- ✓ Lateral Suspension
- ✓ Lumbar Support

## MAXIMO PROFESSIONAL



- ✓ Auto Weight Adjustment
- ✓ Turntable 20° Swivel
- ✓ Lateral Suspension
- ✓ Air Lumbar Support

## MAXIMO DYNAMIC



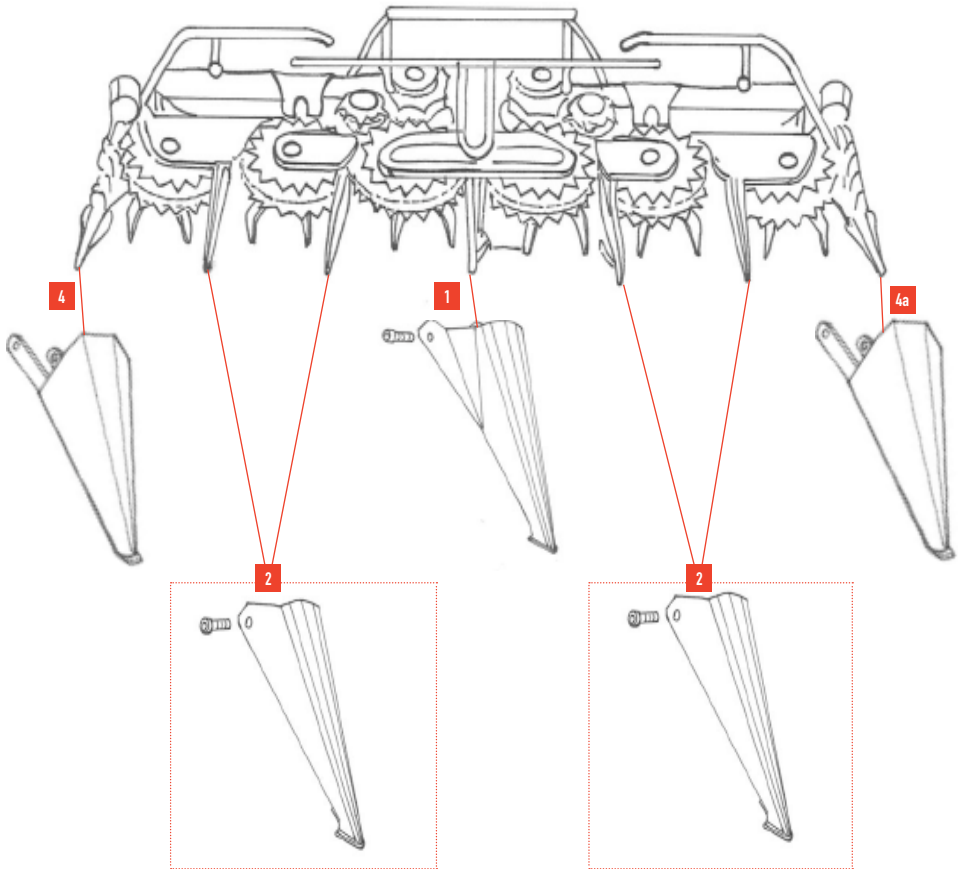
- ✓ Auto Weight Adjustment
- ✓ Turntable 20° Swivel
- ✓ Lateral Suspension
- ✓ Air Lumbar Support
- ✓ Dynamic Damping Heating System

**JMC Parts  
sell a full  
range of  
Grammer  
Seats and  
Seat Parts.**

*These  
seats have  
suspensions  
designed to  
reduce the risk  
of back and  
neck injury  
by removing  
harmful vehicle  
vibrations.  
Grammer set  
new standards  
of sitting  
comfort and  
operating  
convenience.*

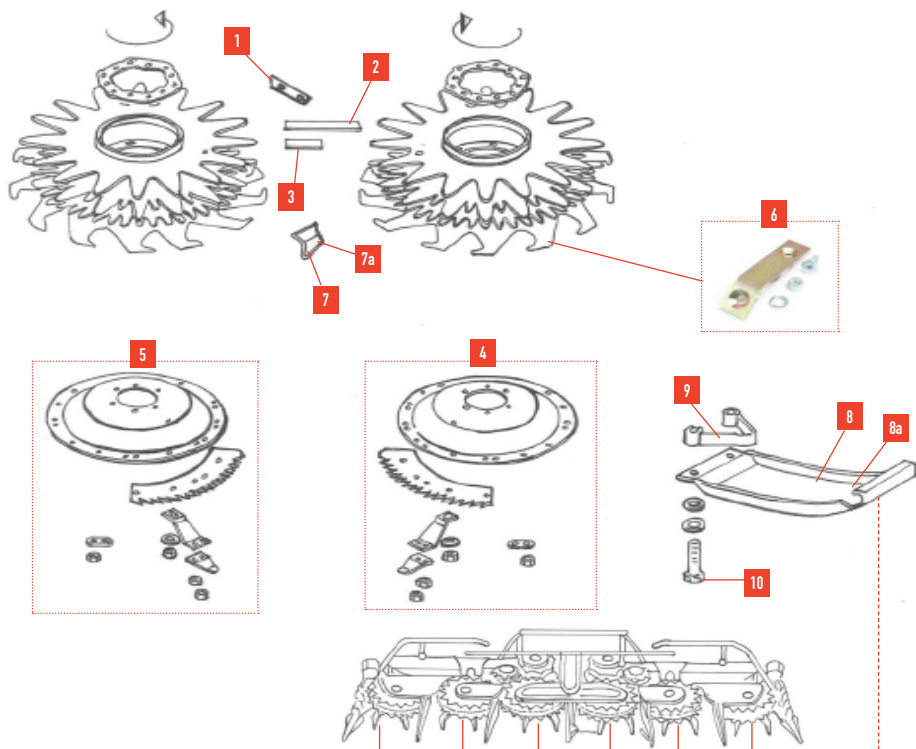
**Ireland's Only Official  
Distributor Grammer Seat**

**Rotary Harvesting Unit 345/360/375**



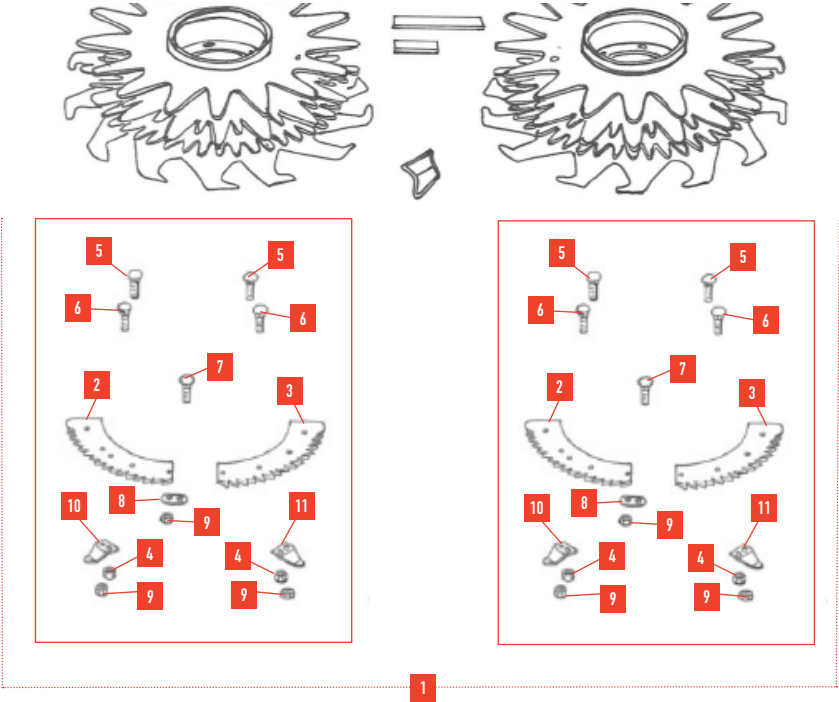
Key	Description	Part No.	Comments	Qty
1	Gather Point	LCA76783		1
2	Gather Point	LCA75945		3
3	Screw	19M9513	M16 x 35	10
	Lock Nut	14M7170	M16	10
4	Gather Point	LCA67550		1
4a	Gather Point	L212763	RH	1
	Screw	19M8341	M12 x 45	4
	Washer	12M7055	13mm	4
		LCA71308		4

## Rotary Harvesting Unit 345/360/375/390 Plus

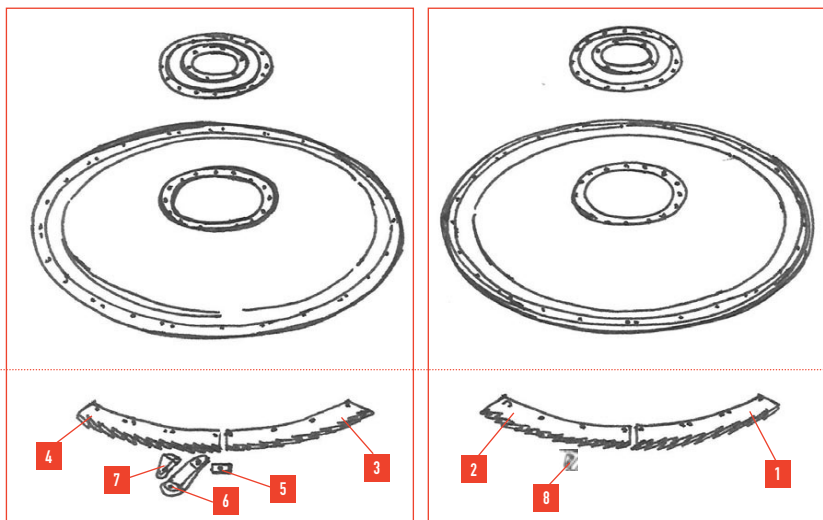
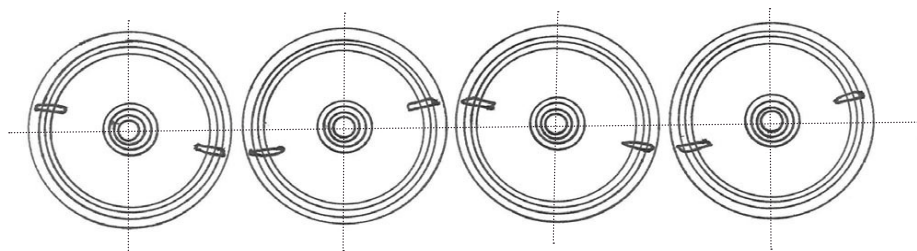


Key	Description	Part No.	Comments	Qty
1	Rotating Scraper	LCA83254		6
2	Rotating Scraper	LCA70937		6
3	Rotating Scraper	LCA69560		6
4	Rotor	LCA79788	(Coated) RH	3
5	Rotor	LCA79787		1
6	Rotating Scraper (Serial 104488-)	LCA87284	Bolted (1 Service Kit for 4 Gathering Drums)	AR
7	Tooth	LCA90654	Clockwise Rotating	AR
7a	Tooth	LCA90655	Counter Clockwise Rotating	AR
8	Skid Plate	LCA83557		6
8a	Skid Plate	LCA100120	345 Plus - 390 Plus	AR
9	Holder	LCA83558	Middle	4
10	Cap Screw	19M7875	Middle - M10 x 70	8

Rotary Harvesting Unit 345/360/375/390 Plus



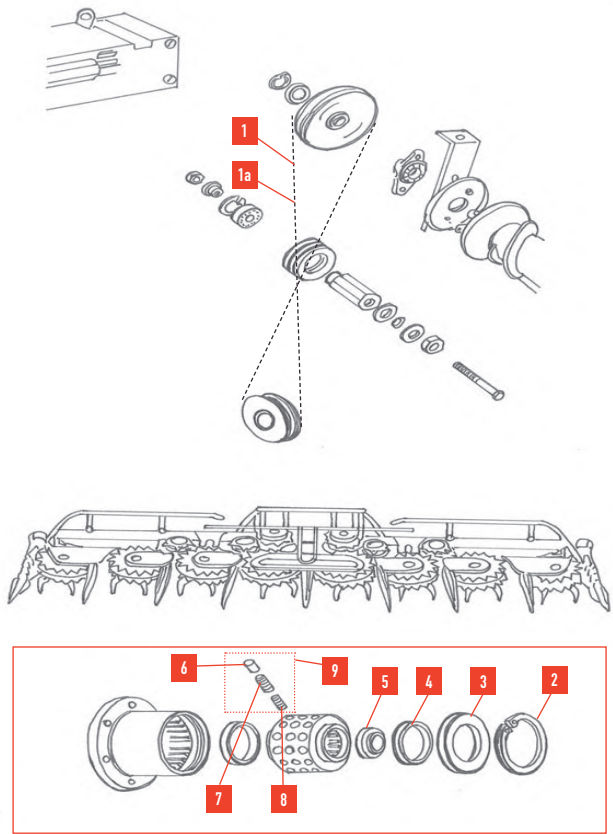
Key	Description	Part No.	Comments	Qty
1	Blade Kit	LCA79040	Coated (1 Service Kit for 2 Discs)	1
2	Knife (Set of 2)	LCA95959	(Coated) RH	4
3	Knife (Set of 2)	LCA95958	(Coated) LH	4
4	Lock Nut	LCA72050	M10	8
5	Bolt	03M7191	M10 x 25	AR
6	Bolt	03M7185	M8 x 25	8
7	Screw	LCA69947	M8 x 16	28
8	Strap	LCA76374		8
9	Lock Nut	14M7166	M8	AR
10	Rotating Scraper	LCA69806	RH	4
11	Rotating Scraper	LCA69805	LH	4


**9**

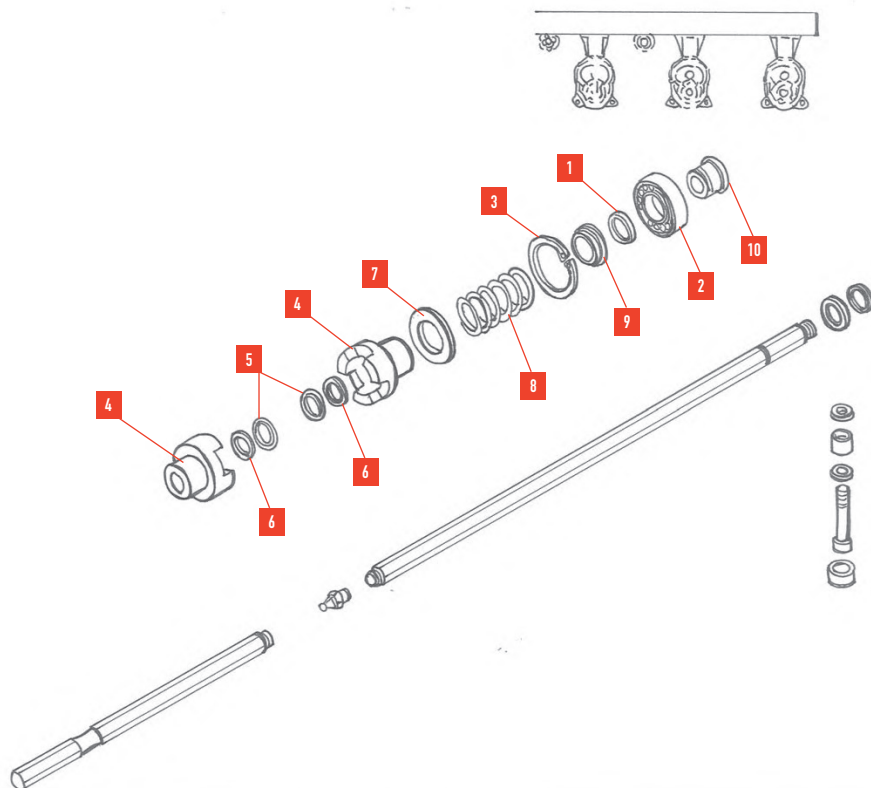
Key	Description	Part No.	Comments	Qty
1	Knife	LCA78236		8
2	Knife	LCA78238		8
3	Knife	LCA78237		8
4	Knife	LCA78239		8
5	Strap	LCA88009		32
6	Reinforcement	LCA89846		4
7	Rotating Scraper	LCA67157		4
8	Rotating Scraper	LCA67156		4
9	Knife Service Kit	LCA89910	(For 2 x Discs)	2



**Belt**

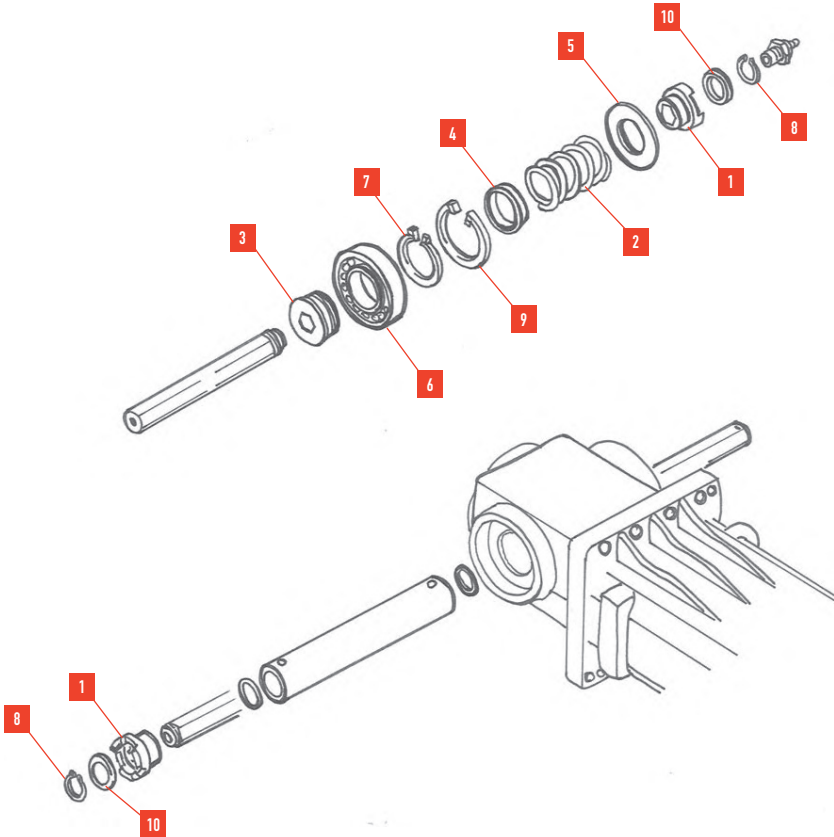


Key	Description	Part No.	Comments	Qty
1	V-Belt	LCA67563	460/4500	2
1a	V-Belt	LCA73100	345 - 375	2
2	Snap Ring	40M7045	345 - 375	AR
3	Ring	LCA71932	345 - 375	AR
4	Bushing	LCA71933	345 - 375	AR
5	Disk	LCA71934	345 - 375	AR
6	Cam	M86290	345 - 375	AR
7	Compression Spring	M886291	345 - 375	AR
8	Compression Spring	M886292	345 - 375	AR
9	Agraset 106	Agraset106	Set. Parts 6,7,8.	AR

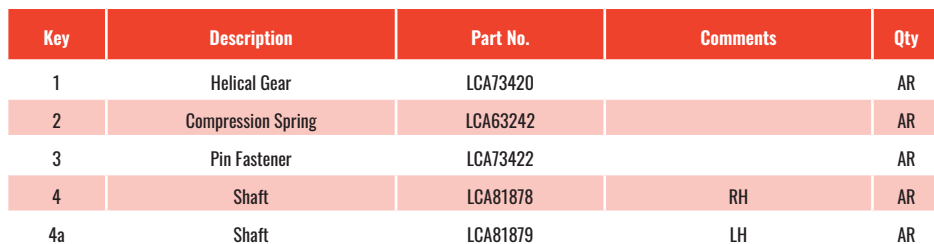


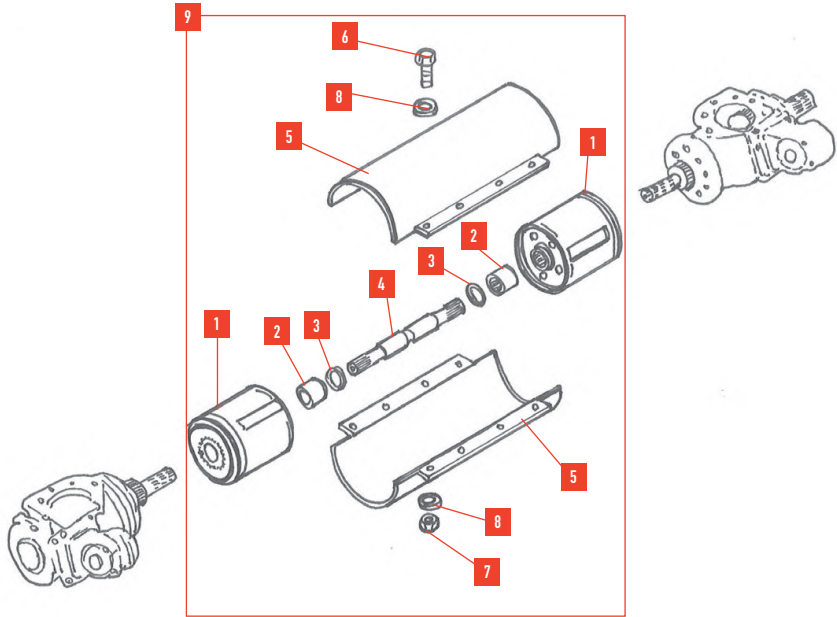
Key	Description	Part No.	Comments	Qty
1	Snap Rint	40M7066		2
2	Ball Bearing	JD9241		2
3	Snap Ring	40M7060		2
4	Coupler	LCA69654		4
5	Snap Ring	40M7098		4
6	Washer	24M7227		4
7	Disk	LCA62684		2
8	Compression Spring	LCA64574		2
9	Disk	LCA62683		2
10	Bushing	LCA73125		2

**Couplers 460**



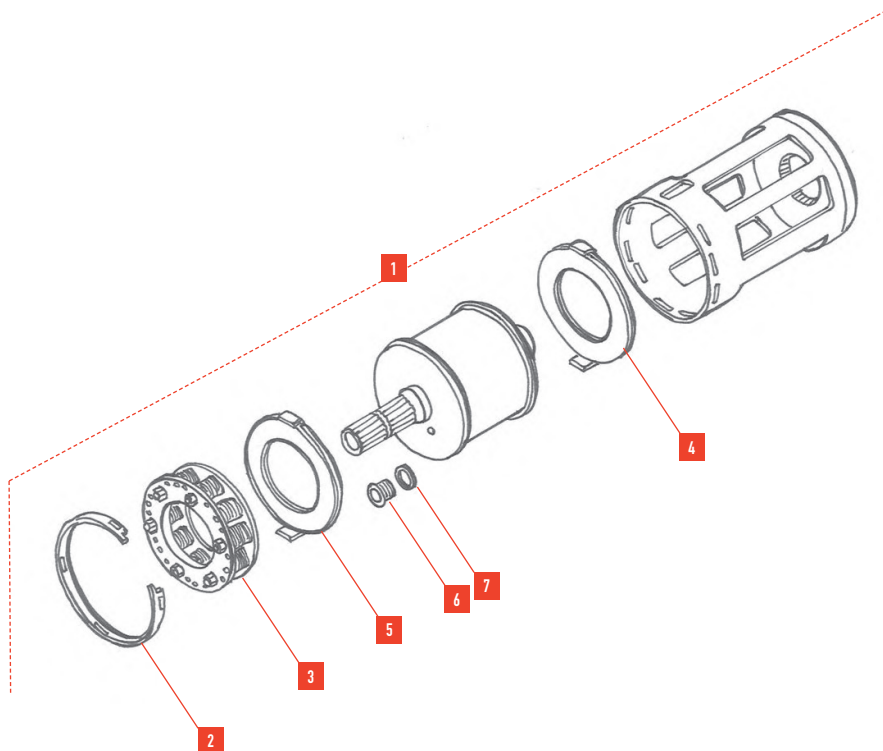
Key	Description	Part No.	Comments	Qty
1	Shift Collar	LCA69654		4
2	Compression Spring	LCA64574		2
3	Bushing	LCA73125		2
4	Disk	LCA62683		2
5	Disk	LCA62684		2
6	Ball Bearing	JD9241		2
7	Snap Ring	40M7066		2
8	Snap Ring	40M7098		4
9	Snap Ring	40M7060		2
10	Washer	24M7227	30 x 42 x 2.500mm	4





Key	Description	Part No.	Comments	Qty
1	Slip Clutch	LCA92955		
2	Bushing	LCA70165		
3	Snap Ring	40M7109		
4	Shaft	LCA92951		
5	Guard	LCA78074		
6	Cap Screw	19M7139		
7	Lock Nut	14M7166		
8	Washer	24M7055		
9	Slip Clutch	LCA93831		





Key	Description	Part No.	Qty
1	Slip Clutch	LCA86023	1
2	Bushing	CC25987	1
3	Spring Assembly	LCA90673	1
4	Clutch Disk	LCA77875	1
5	Clutch Disk	LCA79570	1
6	Drain Plug	15M7075	1
7	Sealing Ring	51M7012	1

# Useful Company Information

Contact our staff with any queries

## Trading conditions

At JMC Parts our goal is to supply genuine spare parts at competitive prices.

Where every effort is made to ensure accuracy of part numbers and descriptions in this catalogue, we cannot guarantee 100% accuracy. Please speak to our expert team if you require clarification on any item.

## Back orders

All orders are shipped on the day the order is received. Occasionally items may be temporarily delayed due to circumstances beyond our control. These items will be shipped as soon as available and priced according to prices in effect at the time of the original order.

## Payment

All deliveries must be pre-paid unless the account holder has agreed terms. We accept all major credit cards, debit cards, bank transfer and payments by cheque and direct debit.

## Contact



Email: [sales@jmcparts.com](mailto:sales@jmcparts.com)

Web: [www.jmcparts.com](http://www.jmcparts.com)



IE: +353 23 8838 038

UK: 01244 457849



Instagram  
@jmc.parts



Facebook  
@JMCpartsAgri



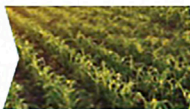
TikTok  
@jmcparts

## Bank details

IBAN: IE49AIBK93404612111098

BIC: AIBKIE2D

VAT No.: 4859753E



## HARVEST PAYMENT PLAN

We have always strived to deliver a Personalised Payment Plan for customers, which can be arranged with any of our Sales Reps.



## PAYMENT OPTIONS

Direct Debit ✓ Credit Card ✓ Cheque ✓

\*NEW Optional Paperless Billing Service now available

## DELIVERY SERVICE

Efficient dispatch for deliveries worldwide  
24 hour delivery in Ireland



## We sell GENUINE parts for:

Harvesters | Mowers | Rakes & Tedders | Balers | Tractors  
Ploughs | Power Harrows | Spreaders | Wagons |  
Tractor Seats | Front Hitches | Weight Blocks



Harvesters



Tractors



Mowers



Balers



Spreaders



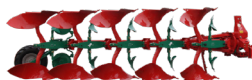
Wagons



Power Harrows



Rakes & Tedders



Ploughs



Tractor Seats



Front Hitches



Weight Blocks

Irl: +353(0)23 8838038

UK: 01244 457849

[www.jmcparts.com](http://www.jmcparts.com)

email: [sales@jmcparts.com](mailto:sales@jmcparts.com) fax: +353(0)23 8838057

